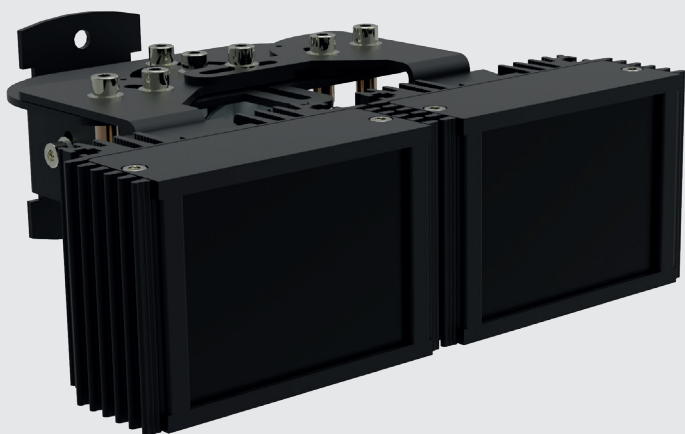


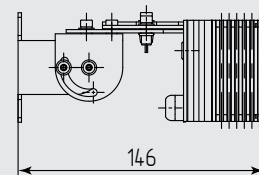
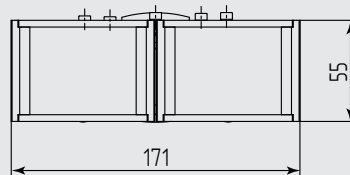
Helios IR-30-S x2

Infrared Illuminator with adjustable angle

MICROLIGHT











Supply voltage	12...24 V AC/DC
Power consumption	7.0 W
Built-in photocell	yes
Ingress protection	IP67, IK08
Operation temperature	-40...+50 °C
Weight	0.9 kg



Wavelength, nm	Angle, ° (min - max)	Distance, m (max - min)	Horizontal spot size, m (min - max)
850	30 - 60	32 - 23	17 - 23
	45 - 90	21 - 15	16 - 21
	60 - 120	17 - 12	17 - 21
	90 - 150	11 - 8	16
	120 - 180	8 - 6	7
940	30 - 60	16 - 11	8 - 11
	45 - 90	10 - 7	8 - 14
	60 - 120	8 - 6	8 - 10
	90 - 150	6 - 4	8
	120 - 180	4 - 3	7

Distance is indicated for the camera with 1.3" 2 Mpix sensor and Sence-Up mode off. Use a correction factor 2.5 - 3.0 to determine the approximate distance for camera with CCD sensor.

-  high-performance surface-mount LEDs
-  increased efficiency of removal of heat from the radiating elements
-  IR light filter with minimal loss of radiation power
-  built-in current regulator
-  tripping delay photocell to prevent accidental turn off
-  built-in photocell
-  supply voltage 185...265 V AC
-  supply voltage 12...24 V AC/DC

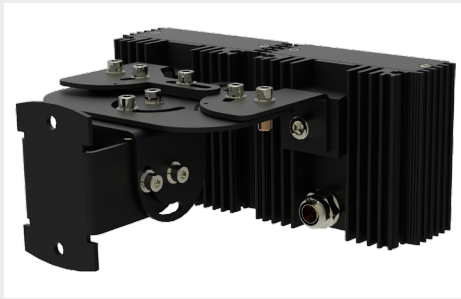
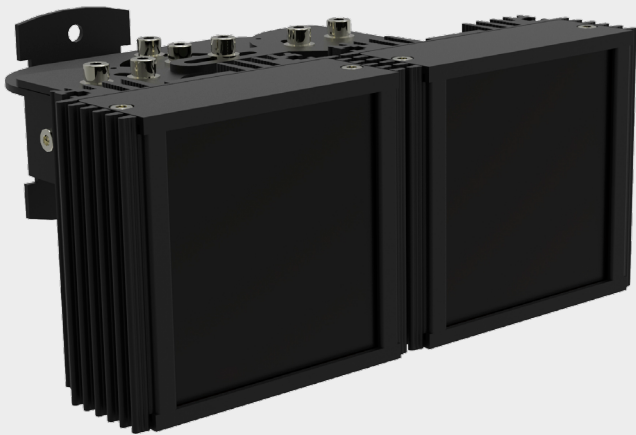
Options available:
 w/o built-in photocell
 PoE IEEE 802.3af (PoE)
 supply voltage 185...265 V AC
 RAL color available



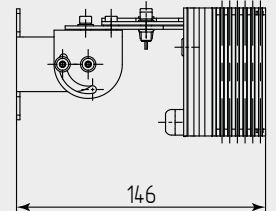
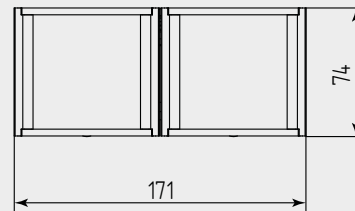
Helios IR-30-M x2

Infrared Illuminator with adjustable angle

MICROLIGHT



Supply voltage	12...24 B AC/DC
Power consumption	10.0 W
Built-in photocell	yes
Ingress protection	IP67, IK08
Operation temperature	-40...+50 °C
Weight	1.1 kg



Wavelength, nm	Angle, ° (min - max)	Distance, m (max - min)	Horizontal spot size, m (min - max)
850	30 - 60	45 - 32	23 - 32
	45 - 90	31 - 22	24 - 31
	60 - 120	23 - 16	23 - 28
	90 - 150	16 - 11	23
	120 - 180	11 - 8	19
940	30 - 60	23 - 16	12 - 16
	45 - 90	14 - 10	11 - 14
	60 - 120	11 - 8	11 - 14
	90 - 150	7 - 5	10
	120 - 180	6 - 4	10



high-performance surface-mount LEDs



increased efficiency of removal of heat from the radiating elements



IR light filter with minimal loss of radiation power



built-in current regulator



tripping delay photocell to prevent accidental turn off



built-in photocell



supply voltage 185...265 V AC



supply voltage 12...24 V AC/DC

Distance is indicated for the camera with 1.3" 2 Mpix sensor and Sence-Up mode off. Use a correction factor 2.5 - 3.0 to determine the approximate distance for camera with CCD sensor.

Options available:

w/o built-in photocell

PoE IEEE 802.3af (PoE)

supply voltage 185...265 V AC

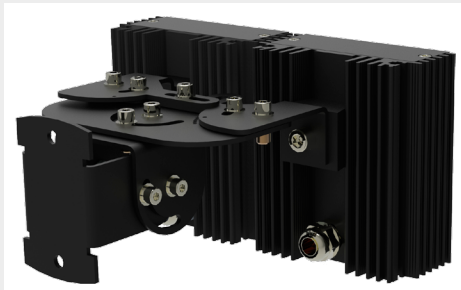
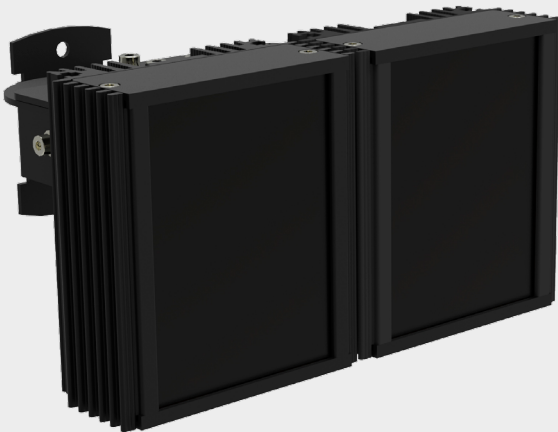
RAL color available



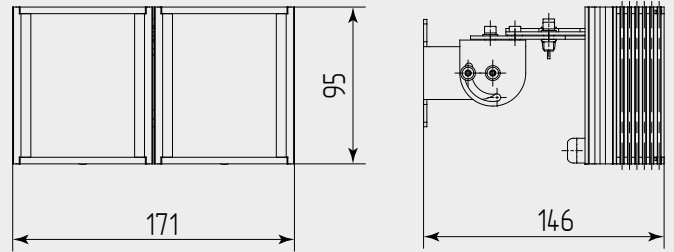
Helios IR-30-L x2

Infrared Illuminator with adjustable angle

MICROLIGHT











Supply voltage	12...24 V AC/DC
Power consumption	15.0 W
Built-in photocell	yes
Ingress protection	IP67, IK08
Operation temperature	-40...+50 °C
Weight	1.3 kg



Wavelength, nm	Angle, ° (min - max)	Distance, m (max - min)	Horizontal spot size, m (min - max)
850	30 - 60	57 - 40	30 - 40
	45 - 90	38 - 27	29 - 38
	60 - 120	28 - 20	28 - 35
	90 - 150	20 - 14	28
	120 - 180	14 - 10	24
940	30 - 60	27 - 19	14 - 19
	45 - 90	17 - 12	13 - 17
	60 - 120	14 - 10	14 - 17
	90 - 150	10 - 7	14
	120 - 180	7 - 5	12

Distance is indicated for the camera with 1.3" 2 Mpix sensor and Sence-Up mode off. Use a correction factor 2.5 - 3.0 to determine the approximate distance for camera with CCD sensor.

-  high-performance surface-mount LEDs
-  increased efficiency of removal of heat from the radiating elements
-  IR light filter with minimal loss of radiation power
-  built-in current regulator
-  tripping delay photocell to prevent accidental turn off
-  built-in photocell
-  supply voltage 185...265 V AC
-  supply voltage 12...24 V AC/DC

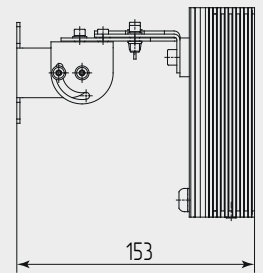
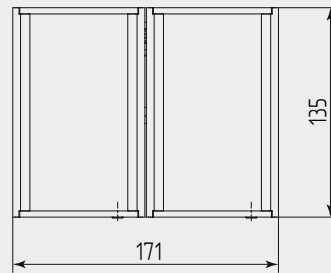
Options available:
 w/o built-in photocell
 PoE IEEE 802.3af (PoE)
 supply voltage 185...265 V AC
 RAL color available



Helios IR-30-XXL x2









Infrared Illuminator with adjustable angle

MICROLIGHT



Supply voltage	12...24 V AC/DC
Power consumption	21.0 W
Built-in photocell	yes
Ingress protection	IP67, IK08
Operation temperature	-40...+50 °C
Weight	1.8 kg

Wavelength, nm	Angle, ° (min - max)	Distance, m (max - min)	Horizontal spot size, m (min - max)
850	7 - 14	280 - 200	35 - 50
	10 - 20	210 - 150	37 - 54
	15 - 30	140 - 100	37 - 54
	30 - 60	73 - 52	40 - 60
	45 - 90	48 - 34	41 - 70
	60 - 120	35 - 25	42 - 90
	90 - 150	25 - 18	60 - 100
	120 - 180	17 - 12	60 - 100
940	7 - 14	145 - 105	18 - 25
	10 - 20	105 - 75	18 - 27
	15 - 30	70 - 50	19 - 27
	30 - 60	35 - 25	19 - 29
	45 - 90	22 - 16	19 - 33
	60 - 120	17 - 12	20 - 42
	90 - 150	11 - 8	22 - 45
	120 - 180	8 - 6	22 - 45

-  high-performance surface-mount LEDs
-  increased efficiency of removal of heat from the radiating elements
-  IR light filter with minimal loss of radiation power
-  built-in current regulator
-  tripping delay photocell to prevent accidental turn off
-  built-in photocell
-  supply voltage 185...265 V AC
-  supply voltage 12...24 V AC/DC

Options available:
 w/o built-in photocell
 PoE IEEE 802.3at (PoE+)
 supply voltage 185...265 V AC
 RAL color available

Distance is indicated for the camera with 1.3 ° 2 Mpix sensor and Sence-Up mode off. Use a correction factor 2.5 - 3.0 to determine the approximate distance for camera with CCD sensor.

