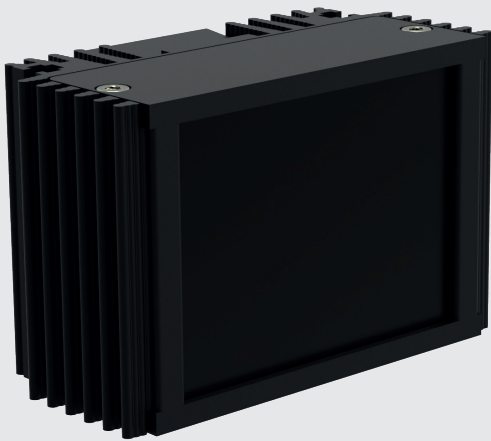


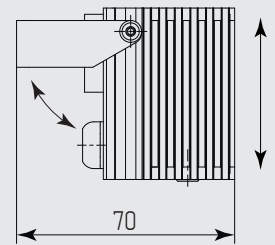
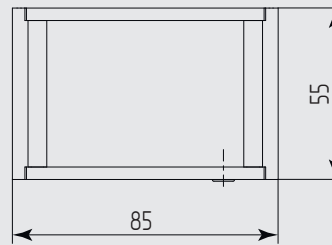
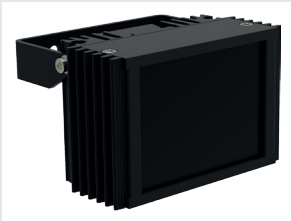
Helios IR-30-S

Short range Infrared illuminator









MICROLIGHT



Supply voltage	12...24 V AC/DC
Power consumption	2.8 W
Built-in photocell	yes
Ingress protection	IP67, IK08
Operation temperature	-40...+50 °C
Weight	0.35 kg



Wavelength, nm	Angle, °	Distance, m	Horizontal spot size, m
850	30	23	12
	45	15	11
	60	12	14
	90	8	11
	120	6	10
940	30	11	6
	45	7	5
	60	6	7
	90	4	6
	120	3	5

-  built-in current regulator
-  increased efficiency of removal of heat from the radiating elements
-  high-performance surface-mount LEDs
-  IR light filter with minimal loss of radiation power
-  lenses system, amplifying the energy of the light beam
-  tripping delay photocell to prevent accidental turn off
-  built-in photocell
-  supply voltage 12...24 V AC/DC

Distance is indicated for the camera with 1.3" 2 Mpix sensor and Sence-Up mode off. Use a correction factor 2.5 - 3.0 to determine the approximate distance for camera with CCD sensor.

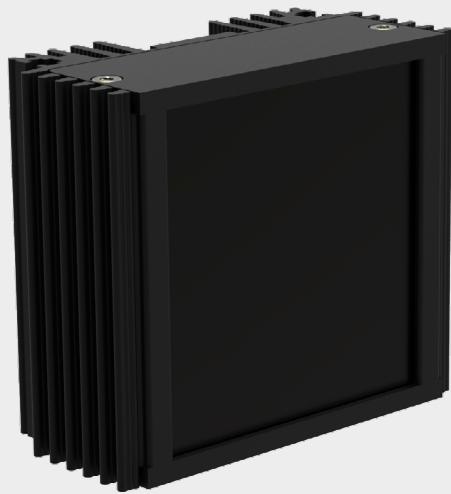
Options available:
 w/o built-in photocell
 bracket ST-3M
 screw-thread 1/4" (1/4-20 UNC)
 PoE IEEE 802.3af (PoE)
 RAL color available



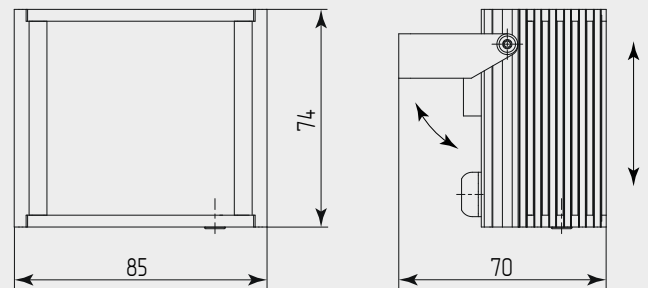
Helios IR-30-M

Medium range Infrared illuminator

MICROLIGHT



Supply voltage	12...24 B AC/DC
Power consumption	5.6 W
Built-in photocell	yes
Ingress protection	IP67, IK08
Operation temperature	-40...+50 °C
Weight	0.45 kg



Wavelength, nm	Angle, °	Distance, m	Horizontal spot size, m
850	30	32	17
	45	22	17
	60	16	18
	90	11	16
	120	8	14
940	30	16	8
	45	10	8
	60	8	8
	90	5	7
	120	4	7

- built-in current regulator
- increased efficiency of removal of heat from the radiating elements
- high-performance surface-mount LEDs
- IR light filter with minimal loss of radiation power
- lenses system, amplifying the energy of the light beam
- tripping delay photocell to prevent accidental turn off
- built-in photocell
- supply voltage 12...24 V AC/DC

Distance is indicated for the camera with 1.3" 2 Mpix sensor and Sence-Up mode off. Use a correction factor 2.5 - 3.0 to determine the approximate distance for camera with CCD sensor.

Options available:

- w/o built-in photocell
- bracket ST-3M
- screw-thread 1/4" (1/4-20 UNC)
- PoE IEEE 802.3af (PoE)
- RAL color available





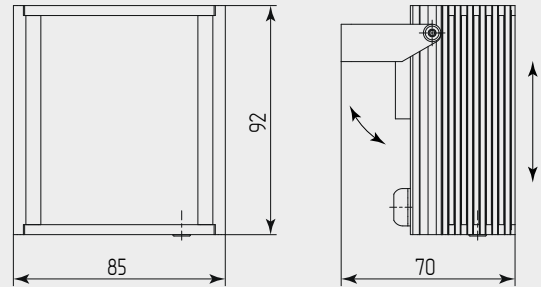
Helios IR-30-L

Medium range Infrared illuminator

MICROLIGHT



Supply voltage	12...24 V AC/DC
Power consumption	7.6 W
Built-in photocell	yes
Ingress protection	IP67, IK08
Operation temperature	-40...+50 °C
Weight	0.6 kg



Wavelength, nm	Angle, °	Distance, m	Horizontal spot size, m
850	30	40	21
	45	27	21
	60	20	20
	90	14	20
	120	10	17
940	30	19	10
	45	12	9
	60	10	10
	90	7	10
	120	5	9

- built-in current regulator
- increased efficiency of removal of heat from the radiating elements
- high-performance surface-mount LEDs
- IR light filter with minimal loss of radiation power
- lenses system, amplifying the energy of the light beam
- tripping delay photocell to prevent accidental turn off
- built-in photocell
- supply voltage 12...24 V AC/DC

Distance is indicated for the camera with 1.3" 2 Mpix sensor and Sence-Up mode off. Use a correction factor 2.5 - 3.0 to determine the approximate distance for camera with CCD sensor.

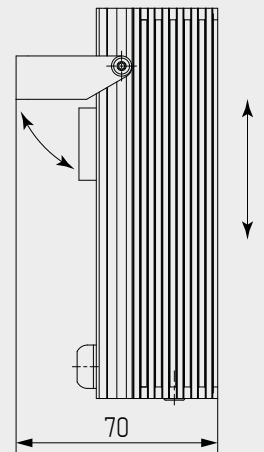
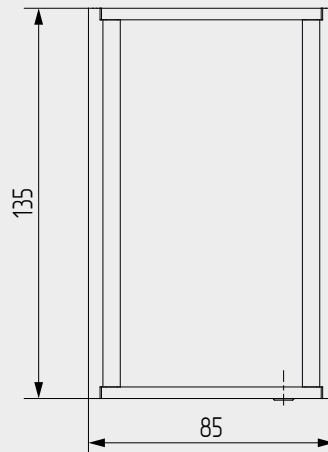
Options available:
 w/o built-in photocell
 bracket ST-3M
 screw-thread 1/4" (1/4-20 UNC)
 PoE IEEE 802.3af (PoE)
 RAL color available



Helios IR-30-XXL

Medium range Infrared illuminator









MICROLIGHT



Supply voltage	12...24 V AC/DC
Power consumption	10.5 W
Built-in photocell	yes
Ingress protection	IP67, IK08
Operation temperature	-40...+50 °C
Weight	0.8 kg

Wavelength, nm	Angle, °	Distance, m	Horizontal spot size, m
850	7	200	69
	10	150	75
	15	100	71
	30	52	79
	45	34	79
	60	25	79
	90	18	100
	120	12	115
940	7	105	24
	10	75	36
	15	50	37
	30	25	36
	45	16	36
	60	12	37
	90	8	44
	120	6	56

Distance is indicated for the camera with 1.3 ° 2 Mpix sensor and Sence-Up mode off. Use a correction factor 2.5 - 3.0 to determine the approximate distance for camera with CCD sensor..

-  increased efficiency of removal of heat from the radiating elements
-  IR light filter with minimal loss of radiation power
-  tripping delay photocell to prevent accidental turn off
-  built-in photocell
-  built-in current regulator
-  lenses system, amplifying the energy of the light beam
-  high-performance surface-mount LEDs
-  supply voltage 12...24 V AC/DC

Options available:

- w/o built-in photocell
- PoE IEEE 802.3af
- bracket ST-3M
- screw-thread 1/4" (1/4-20 UNC)
- RAL color available

