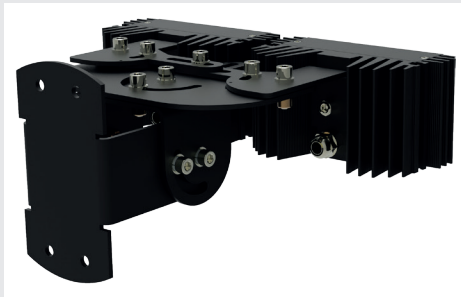
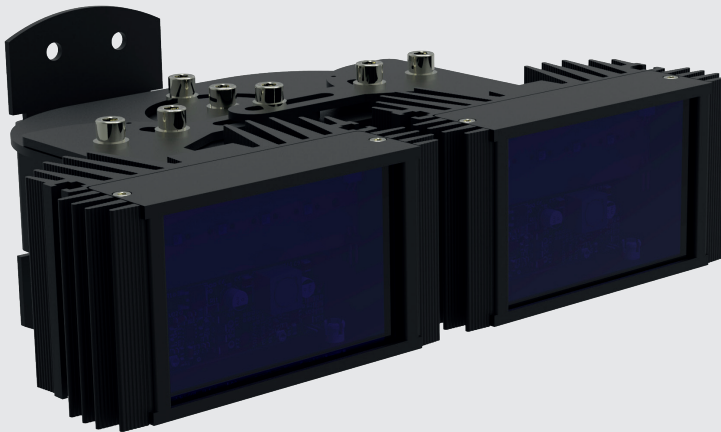




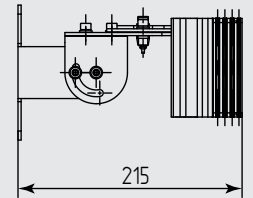
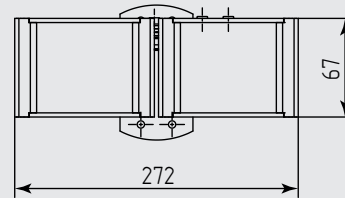
# Helios IR-294-S x2

Infrared Illuminator with adjustable angle









**MICROLIGHT**



Supply voltage	12...24 V AC/DC
Power consumption	18.0 W
Built-in photocell	yes
Ingress protection	IP67, IK10
Operation temperature	-40...+50 °C
Weight	3.0 kg



Wavelength, nm	Angle, ° (min - max)	Distance, m (max - min)	Horizontal spot size, m (min - max)
850	10 - 20	195 - 140	35 - 49
	15 - 30	125 - 90	33 - 47
	30 - 60	65 - 45	34 - 47
	45 - 90	45 - 32	34 - 45
	60 - 110	33 - 23	33 - 38
	90 - 140	24 - 17	34
	120 - 170	17 - 12	29
940	10 - 20	90 - 65	16 - 23
	15 - 30	57 - 40	15 - 21
	30 - 60	31 - 22	16 - 22
	45 - 90	20 - 14	15 - 20
	60 - 110	16 - 11	16 - 18
	90 - 140	11 - 8	16
	120 - 170	8 - 6	14

-  high-performance surface-mount LEDs
-  increased efficiency of removal of heat from the radiating elements
-  IR light filter with minimal loss of radiation power
-  built-in current regulator
-  tripping delay photocell to prevent accidental turn off
-  built-in photocell
-  supply voltage 185...265 V AC
-  supply voltage 12...24 V AC/DC

Distance is indicated for the camera with 1.3 ° 2 Mpix sensor and Sence-Up mode off. Use a correction factor 2.5 - 3.0 to determine the approximate distance for camera with CCD sensor.

Options available:  
 w/o built-in photocell  
 PoE IEEE 802.3at (PoE+)  
 supply voltage 185...265 V AC  
 RAL color available





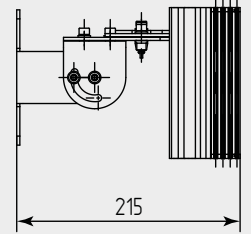
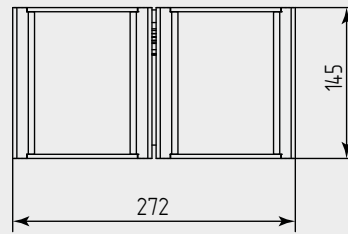
# Helios IR-294-M x2

Infrared Illuminator with adjustable angle









**MICROLIGHT**



Supply voltage	12...24 V AC/DC
Power consumption	36.0 W
Built-in photocell	yes
Ingress protection	IP67, IK10
Operation temperature	-40...+50 °C
Weight	3.8 kg



Wavelength, nm	Angle, ° (min - max)	Distance, m (max - min)	Horizontal spot size, m (min - max)
850	10 - 20	275 - 195	48 - 68
	15 - 30	175 - 125	46 - 65
	30 - 60	93 - 66	48 - 66
	45 - 90	64 - 45	49 - 64
	60 - 110	45 - 32	45 - 52
	90 - 140	33 - 23	47
	120 - 170	24 - 17	42
940	10 - 20	125 - 90	22 - 31
	15 - 30	78 - 55	20 - 28
	30 - 60	44 - 31	23 - 31
	45 - 90	28 - 20	21 - 28
	60 - 110	23 - 16	23 - 26
	90 - 140	16 - 11	23
	120 - 170	11 - 8	19

-  high-performance surface-mount LEDs
-  increased efficiency of removal of heat from the radiating elements
-  IR light filter with minimal loss of radiation power
-  built-in current regulator
-  tripping delay photocell to prevent accidental turn off
-  built-in photocell
-  supply voltage 185...265 V AC
-  supply voltage 12...24 V AC/DC

Options available:  
 w/o built-in photocell  
 PoE IEEE 802.3at (UPoE)  
 supply voltage 185...265 V AC  
 RAL color available



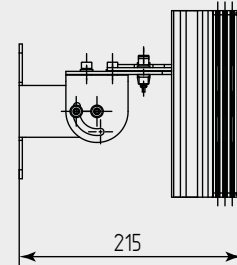
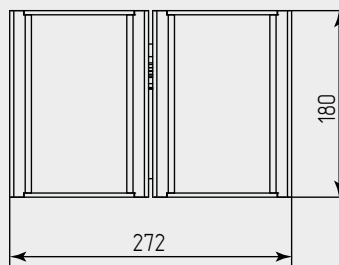
# Helios IR-294-L x2

Infrared Illuminator with adjustable angle

MICROLIGHT



Supply voltage	185...265 B AC
Power consumption	54.0 W
Built-in photocell	yes
Ingress protection	IP67, IK10
Operation temperature	-40...+50 °C
Weight	4.4 kg



Wavelength, nm	Angle, ° (min - max)	Distance, m (max - min)	Horizontal spot size, m (min - max)
850	10 - 20	340 - 240	59 - 83
	15 - 30	220 - 155	57 - 80
	30 - 60	115 - 80	59 - 81
	45 - 90	78 - 55	57 - 78
	60 - 110	57 - 40	57 - 66
	90 - 140	40 - 28	57
	120 - 170	30 - 21	52
940	10 - 20	155 - 110	27 - 38
	15 - 30	92 - 65	24 - 34
	30 - 60	54 - 38	28 - 38
	45 - 90	34 - 24	26 - 34
	60 - 110	27 - 19	27 - 31
	90 - 140	20 - 14	28
	120 - 170	14 - 10	24



high-performance surface-mount LEDs



increased efficiency of removal of heat from the radiating elements



IR light filter with minimal loss of radiation power



built-in current regulator



tripping delay photocell to prevent accidental turn off



built-in photocell



Supply voltage 185...265 V AC



supply voltage 12...24 V AC/DC

#### Options available:

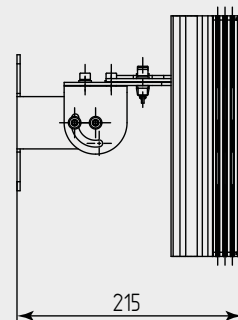
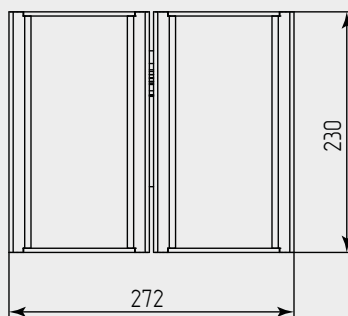
- w/o built-in photocell
- PoE IEEE 802.3at (UPoE)
- supply voltage 12...24 V AC/DC
- RAL color available



# Helios IR-294-XL x2

Infrared Illuminator with adjustable angle

MICROLIGHT



Supply voltage	185...265 B AC
Power consumption	70.0 W
Built-in photocell	yes
Ingress protection	IP67, IK10
Operation temperature	-40...+50 °C
Weight	5.2 kg

Wavelength, nm	Angle, ° (min - max)	Distance, m (max - min)	Horizontal spot size, m (min - max)
850	10 - 20	395 - 280	69 - 97
	15 - 30	255 - 180	67 - 93
	30 - 60	130 - 94	69 - 94
	45 - 90	90 - 64	69 - 91
	60 - 110	65 - 46	65 - 75
	90 - 140	45 - 32	64
	120 - 170	34 - 24	59
940	10 - 20	180 - 130	32 - 45
	15 - 30	115 - 80	29 - 41
	30 - 60	62 - 44	32 - 44
	45 - 90	40 - 28	31 - 40
	60 - 110	31 - 22	31 - 36
	90 - 140	23 - 16	33
	120 - 170	16 - 11	28

Distance is indicated for the camera with 1.3 ° 2 Mpix sensor and Sence-Up mode off. Use a correction factor 2.5 - 3.0 to determine the approximate distance for camera with CCD sensor.



high-performance surface-mount LEDs



increased efficiency of removal of heat from the radiating elements



IR light filter with minimal loss of radiation power



built-in current regulator



tripping delay photocell to prevent accidental turn off



built-in photocell



supply voltage 185...265 V AC



supply voltage 12...24 V AC/DC

Options available:

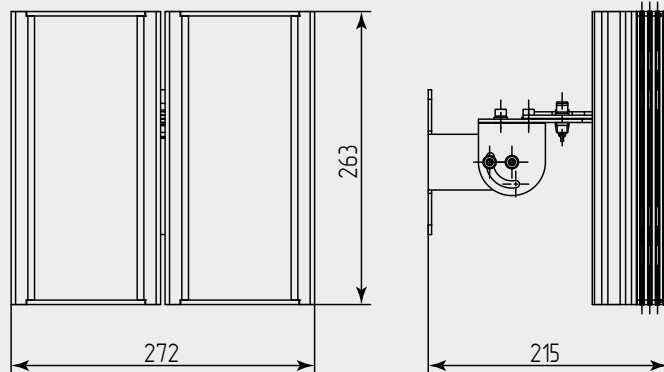
- w/o built-in photocell
- supply voltage 12...24 V AC/DC
- RAL color available



# Helios IR-294-XXL x2

Infrared Illuminator with adjustable angle

MICROLIGHT



Supply voltage	185...265 B AC
Power consumption	90.0 W
Built-in photocell	yes
Ingress protection	IP67, IK10
Operation temperature	-40...+50 °C
Weight	5.8 kg

Wavelength, nm	Angle, ° (min - max)	Distance, m (max - min)	Horizontal spot size, m (min - max)
850	10 - 20	435 - 310	76 - 108
	15 - 30	283 - 200	74 - 104
	30 - 60	145 - 105	77 - 105
	45 - 90	100 - 72	78 - 102
	60 - 110	72 - 51	72 - 84
	90 - 140	51 - 36	72
	120 - 170	38 - 27	66
940	10 - 20	205 - 145	35 - 50
	15 - 30	120 - 85	31 - 44
	30 - 60	69 - 49	36 - 49
	45 - 90	44 - 31	34 - 44
	60 - 110	35 - 25	35 - 41
	90 - 140	25 - 18	35
	120 - 170	17 - 12	29



high-performance surface-mount LEDs



increased efficiency of removal of heat from the radiating elements



IR light filter with minimal loss of radiation power



built-in current regulator



tripping delay photocell to prevent accidental turn off



built-in photocell



supply voltage 185...265 V AC



supply voltage 12...24 V AC/DC

Options available:

w/o built-in photocell

supply voltage 12...24 V AC/DC

RAL color available

